

	Thickness	Dimension (w x l)	Weight per mat
EuroMat Standard	14mm	1200 x 2410mm	36kg
EuroMat Pedestrian	14mm	1200 x 2410mm	36kg
EuroMat Standard	14mm	600 x 2410mm	18kg
EuroMat Pedestrian	14mm	600 x 2410mm	18kg
Material	Recycled or virgin High Density (HD) Polyethylene - 100% recyclable		
Colours available	Black for recycled HD Polyethylene Choice of colours for virgin HD Polyethylene		
Optional extras for connectivity	Standard connectors - 2 way and 4 way - for longer term connection. Metal connectors for heavy and tracked equipment 'Quick Fit' connectors for fast installation Metal U pins for slopes and cambers		
Optional extra	Non slip reflective markings and 'cats' eyes' for night safety		
Environmental features	Weather proof, water and chemical resistant. HD Polyethylene is resistant to acids, alkalis & solvents		
Customisation	Corporate logo and contact details can be added at low cost subject to minimum order		
Guarantee	5 year warranty with a field life of 10 years when used as recommended		



EUROMAT®

THE FAST AND SAFE WAY FORWARD

- Easy to install ground protection
- Fast temporary access, working areas and trackways
- Avoid property, heritage and environmental damage
- Prevent bogged down vehicles
- Avoid health and safety issues
- Save £££'s and time in reinstating ground
- Project a professional image.... and help your customers
- Designed and Manufactured in the UK



Pathfinder House, 2 Cross Farm Road, Draycott,
Bristol BS27 3SE UK

Tel: 0845 0171247 Mobile: 07931 510688

E-mail: james@pathfinderinnovations.com Web:

www.pathfinderinnovations.com

EuroMats are available for sale & hire through our official distributors and agents - please contact us for details

EUROMAT®



MADE IN THE UK

EUROMAT®

Heavy Duty Ground Protection Mats

Unbreakable up to 80 tonnes*, EuroMat is the ultimate ground protection and temporary access mat for moving and operating plant and equipment over soft or sensitive ground - Excavators, Trucks, Diggers, Cranes, Drilling Rigs...

Amazingly Tough & Flexible

Tough 14mm thick high density polyethylene mats are virtually indestructible, weigh only 36kg and their built in handles make handling and installation easy.

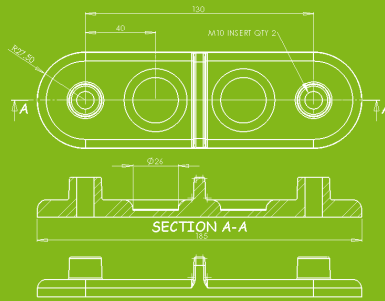
Anti Slip Surface

The unique chevron design delivers ultimate grip and the surface profile dispels mud to maintain vehicle traction even in the worst conditions.

Semi-Permanent Usage

Connection options are available for more permanent situations, steep terrain and very heavy and tracked equipment.

*Tested at National Physical Laboratories



As used for BBCs Children in Need at Chewton Hall, with Chris Evans



EuroMat, the latest innovation from Pathfinder, leads the way for fast deployment, temporary ground protection and access over soft or sensitive ground, and up to 80 tonnes!*

Advantages

- Easy to install ground protection
- Light enough for manual handling and installation
- Fast temporary access, working areas and trackways
- Low transport and handling costs
- No ground preparation required
- Strong yet flexible to follow contours of the underlying surface
- Range of connection options for different terrain and equipment
- Avoid property, heritage and environmental damage
- Avoid health and safety issues caused by poor ground and working conditions
- Designed and made in the UK



EuroMat Pedestrian, providing joint access for vehicles and pedestrians (especially wheelchairs and buggies), incorporates the industry's premium non slip, non trip surface and reflective markings for night safety.

EuroMats are light enough for two men to handle, prevent vehicles getting bogged down and significantly reduce damage to ground, including heritage and eco-sensitive areas, avoiding the need for reinstatement. The unique 'mud dispersing' chevron grip-surface is seen as the most effective in the market and is ideal when the weather or ground conditions deteriorate.



*Load Performance depends on ground conditions as well as the weight and types of vehicles and plant. Pathfinder Ltd, its agents or employees are not liable for any damage to existing ground or property through use of EuroMats.

